

TECHNICAL MANUAL

**ORGANIZATIONAL, DIRECT SUPPORT, AND
GENERAL SUPPORT MAINTENANCE
REPAIR PARTS AND SPECIAL TOOLS LIST
(INCLUDING DEPOT MAINTENANCE REPAIR PARTS AND
SPECIAL TOOLS)**

**COMPRESSOR UNIT, RECIPROCATING
ELECTRIC, 25 CFM, 175 PSI
MODEL 50-6717
NSN 4310-01-090-5911**

Approved for public release. Distribution is unlimited.

This manual supersedes TM 5-4310-371-24P, 25 September 1981.

**HEADQUARTERS, DEPARTMENT OF THE ARMY
31 July 1989**

TECHNICAL MANUAL

No. 5-4310-371-24P

HEADQUARTERS
DEPARTMENT OF THE ARMY
WASHINGTON, D.C., 31 July 1989

**Organizational, Direct Support, and General Support Maintenance
Repair Parts and Special Tools List
(Including Depot Maintenance Repair Parts and Special Tools)
for
COMPRESSOR UNIT, RECIPROCATING
ELECTRIC, 25 CFM, 175 PSI
MODEL 50-6717
NSN 4310-01-090-5911**

Approved for public release. Distribution is unlimited.
Current as of
9 May 1989

REPORTING OF ERRORS AND RECOMMENDING IMPROVEMENTS

You can help improve this manual. If you find any mistake or if you know of a way to improve the procedures, please let us know. Mail your letter, DA Form 2028 (Recommended Changes to Publications and Blank Forms) or DA Form 2028-2 located in the back of this manual direct to: Commander, U.S. Army Troop Support Command, ATTN: AMSTR-MCTS, 4300 Goodfellow Blvd., St. Louis, MO 63120-1798. A reply will be furnished directly to you.

TABLE OF CONTENTS

	Page	Illust/ Figure
Section I.	Introduction 1	
Section II.	Repair Parts List	
Group 01.	Belt Guard	
	Belt Guard Assembly..... 1-1	1
Group 02.	Electric Motor and Related Parts	
	V-Belts 2-1	2
	Motor Assembly..... 3-1	3
	Motor Cable Assembly 4-1	4
	Pressure Switch Cable Assembly 5-1	5
	Motor Starter Assembly 6-1	6
	Pressure Switch Assembly 7-1	7
Group 03.	Air Compressor	
	Compressor Pump..... 8-1	8
	Tubing and Manifold Assemblies 9-1	9
	Valve Assemblies, Intake and Exhaust 10-1	10
	Cylinder and Crankcase Assembly 11-1	11
	Piston, Rod, and Crankshaft Assembly 12-1	12
Group 04.	Air Receiver	
	Air Receiver Assembly 13-1	13
Section III.	Special Tools List (Not Applicable)	
Section IV.	Cross-Reference Index I-1	
	National Stock Number Index I-1	
	Part Number Index I-2	
Figure and Item Number Index I-6	

*This manual supersedes TM 5-4310-371-24P, 25 September 1981.

SECTION I INTRODUCTION

1. SCOPE. This Repair Parts and Special Tools List (RPSTL) lists and authorizes spares and repair parts; special tools; special test, measurement, and diagnostic equipment (TMDE); and other special support equipment required for performance of organizational, direct support and general support maintenance of the Compressor Unit, Reciprocating. It authorizes the requisitioning, issue, and disposition of spares, repair parts and special tools as indicated by the source, maintenance and recoverability (SMR) codes.

2. GENERAL. In addition to this section, Introduction, this Repair Parts and Special Tools List is divided into the following sections:

a. Section II. Repair Parts List. A list of spares and repair parts authorized by this RPSTL for use in the performance of maintenance. The list also includes parts which must be removed for replacement of the authorized parts. Parts lists are composed of functional groups in ascending alphanumeric sequence, with the parts in each group listed in ascending figure and item number sequence. Bulk materials are listed in item name sequence. Repair parts kits are listed separately in their own functional group within Section II. Repair parts for repairable special tools are also listed in this section. Items listed are shown on the associated illustration(s)/figure(s).

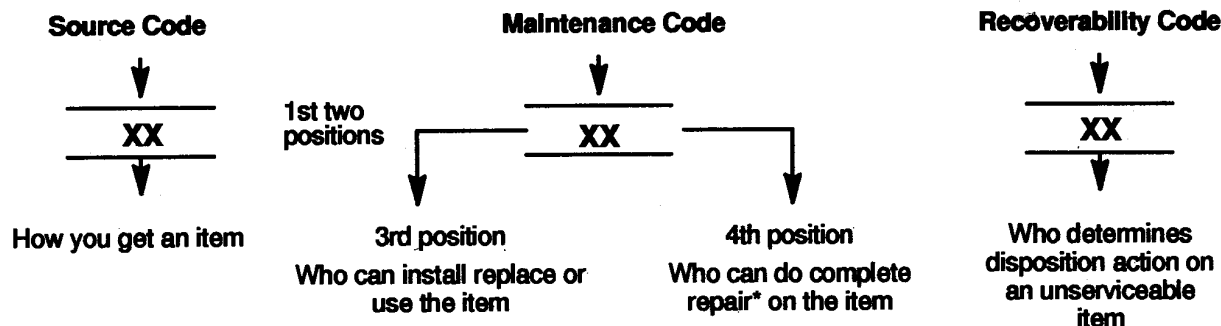
b. Section III. Special Tools List. A list of special tools, special TMDE, and other special support equipment authorized by this RPSTL (as indicated by Basis of Issue (BOI) information in DESCRIPTION AND USABLE ON CODE column) for the performance of maintenance.

c. Section IV. Cross-references Indexes. A list, in National Item Identification Number (NIIN) sequence, of all National stock numbered items appearing in the listing, followed by a list in alphanumeric sequence of all part numbers appearing in the listings. National stock numbers and part numbers are cross-referenced to each illustration figure and item number appearance. The figure and item number index lists figure and item number in alphanumeric sequence and cross references NSN, FSCM and part number.

3. EXPLANATION OF COLUMNS (SECTIONS II AND III).

a. ITEM NO. (Column (1)). Indicates the number used to identify items called out in the illustration.

b. SMR Code (Column (2)). The Source, Maintenance, and Recoverability (SMR) code is a 5-position code containing supply/requisitioning information, maintenance category authorization criteria, and disposition instruction, as shown in the following breakout:



*Complete Repair: Maintenance capacity, capability, and authority to perform all corrective maintenance tasks of the "Repair" function in a use/user environment in order to restore serviceability to a failed item.

(1) **Source Code.** The source code tells you how to get an item needed for maintenance, repair, or overhaul of an end item/equipment. Explanations of source codes follows:

PA
 PB
 PC**
 PD
 PE
 PF
 PG

Explanation

Stocked items; use the applicable NSN to request/requisition items with these source codes. They are authorized to the category indicated by the code entered in the 3d position of the SMR code.

**NOTE: Items coded PC are subject to deterioration.

KD
 KF
 KB

Explanation

Items with these codes are not to be requested/requisitioned individually. They must be made from bulk material which is identified by the part number in the DESCRIPTION and USABLE ON CODE (UOC) column and listed in the Bulk Material group of the repair parts list in this RPSTL. If the item is authorized to you by the 3d position code of the SMR code, but the source code indicates it is made at a higher level, order the item from the higher level of maintenance.

MO--(Made at org. AVUM Level
 MF--(Made at DS/ AVUM Level
 MH--(Made at GS Level)
 ML--Made at Specialized Repair Activity (SRA)
 MD--(Made at Depot)

AO--(Assembled by
org/AVUM Level)
AF--(Assembled by
DS/AVIM Level)
AH--(Assembled by
GS Category)
AL--(Assembled by
SRA)
AD--(Assembled by
Depot)

Explanation

Items with these codes are not to be requested/requisitioned individually. The parts that make up the assembled item must be requisitioned or fabricated and assembled at the level of maintenance indicated by the source code. If the 3d position code of the SMR code authorizes you to replace the item, but the source code indicates the items are assembled at a higher level, order the item from the higher level of maintenance.

Code

Explanation

- XA--Do not requisition an "XA"-coded item. Order its next higher assembly. (Also, refer to the NOTE below.)
- XB--If an "XB" item is not available from salvage, order it using the FSCM and part number given.
- XC--Installation drawing, diagram, instruction sheet, field service drawing, that is identified by manufacturer's part number.
- XD--Item is not stocked. Order an "XD"-coded item through normal supply channels using the FSCM and part number given, if no NSN is available.

NOTE

Cannibalization or controlled exchange, when authorized, may be used as a source of supply for items with the above source codes, except for those source coded "XA" or those aircraft support items restricted by requirements of AR 700-42.

(2) Maintenance Code. Maintenance codes tells you the level(s) of maintenance authorized to USE and REPAIR support items. The maintenance codes are entered in the third and fourth positions of the SMR code as follows:

- (a) The maintenance code entered in the third position tells you the lowest maintenance level authorized to remove, replace, and use an item. The maintenance code entered in the third position will indicate authorization to one of the following levels of maintenance.

Code Application/Explanation

- C --Crew or operator maintenance done within organizational or aviation unit maintenance.
- O --Organizational or aviation unit category can remove, replace, and use the item.
- F --Direct support or aviation intermediate level can remove, replace, and use the item.

- H --General support 1 level can remove, replace, and use the item.
- L --Specialized repair activity can remove, replace, and use the item.
- D --Depot level can remove, replace, and use the item.

(b) The maintenance code entered in the fourth position tells whether or not the item is to be repaired and identifies the lowest maintenance level with the capability to do complete repair (i.e., perform all authorized repair functions.) NOTE: Some limited repair may be done on the item at a lower level of maintenance, if authorized by the Maintenance Allocation Chart (MAC) and SMR codes. This position will contain one of the following maintenance codes.

Code	Application/Explanation
O	--Organizational or (aviation unit) is the lowest level that can do complete repair of the item.
F	--Direct support or aviation intermediate is the lowest level that can do complete repair of the item.
H	--General Support is the lowest level that can do complete repair of the item.
L	--Specialized repair activity is the lowest level that can do complete repair of the item.
D	--Depot is the lowest level that can do complete repair of the item.
Z	--Nonreparable. No repair is authorized.
B	--No repair is authorized. (No parts or special tools are authorized for the maintenance of a "B" coded item). However, the item may be reconditioned by adjusting, lubricating, etc., at the user level.

(3) Recoverability Code. Recoverability codes are assigned to items to indicate the disposition action on unserviceable items. The recoverability code is entered in the fifth position of the SMR Code as follows:

Recoverability Codes	Application/Explanation
Z	--Nonreparable item. When unserviceable, condemn and dispose of the item at the level of maintenance shown in 3d position of SMR Code.

Recoverability Codes	Application/Explanation
O	--Reparable item. When uneconomically reparable, condemn and dispose of the item at organizational or aviation unit level.
F	--Reparable item. When uneconomically reparable, condemn and dispose of the item at the direct support or aviation intermediate level.
H	--Reparable item. When uneconomically reparable, condemn and dispose of the item at the general support level.
D	--Reparable item. When beyond lower level repair capability, return to depot. Condemnation and disposal of item not authorized below depot level.
L	--Reparable item. Condemnation and disposal not authorized below specialized repair activity (SRA).
A	--Item requires special handling or condemnation procedures because of specific reasons (e.g., precious metal content, high dollar value, critical material, or hazardous material). Refer to appropriate manual/directives for specific instructions.

c. FSCM (Column (3)). The Federal Supply Code for Manufacturer (FSCM) is a 5-digit numeric code which is used to identify the manufacturer, distributor, or Government agency, etc., that supplies the item.

d. PART NUMBER (Column (4)). Indicates the primary number used by the manufacturer, (individual, company, firm, corporation, or Government activity), which controls the design and characteristics of the item by means of its engineering drawings, specifications standards, and inspection requirements to identify an item or range of items.

NOTE

When you use an NSN to requisition an item, the item you receive may have a different part number from the part ordered.

e. DESCRIPTION AND USABLE ON CODE (UOC) (Column (5)). This column includes the following information:

- (1) The Federal item name and, when required, a minimum description to identify the item.
- (2) The physical security classification of the item is indicated by the parenthetical entry, e.g., Phy Sec C1 - Confidential, Phy Sec C1 (S) - Secret, Phy Sec C1 (T) - Top Secret.

- (3) Items that are included in kits and sets are listed below the name of the kit or set.
- (4) Spare/repair parts that make up an assembled item are listed immediately following the assembled item line entry.
- (5) Part numbers for bulk materials are referenced in this column in the line item entry for the item to be manufactured/fabricated.
- (6) When the item is not used with all serial numbers of the same model, the effective serial numbers are shown on the last line(s) of the description (before UOC).
- (7) The usable on code, when applicable (see paragraph 5, Special Information).
- (8) In the Special Tools List section, the basis of issue (BOI) appears as the last line(s) in the entry for each special tool, special TMDE, and other special support equipment. When density of equipments supported exceeds density spread indicated in the basis of issue, the total authorization is increased proportionately.
- (9) The statement "END OF FIGURE" appears just below the last item description in Column 5 for a given figure in both Section II and Section III.
- (10) The indenture, shown as dots appearing before the repair part, indicates that the item is a repair part of the next higher assembly.

f. **QTY (Column (6)).** The QTY (quantity per figure column) indicates the quantity of the item used in the breakout shown on the illustration figure, which is prepared for a functional group, subfunctional group, or an assembly. A "V" appearing in this column in lieu of a quantity indicates that the quantity is variable and may vary from application to application.

4. EXPLANATION OF COLUMNS (SECTION IV).

a. NATIONAL STOCK NUMBER (NSN) INDEX.

- (1) **STOCK NUMBER column.** This column lists the NSN by National item identification number (NIIN) sequence. The NIIN consists of the last nine digits of the

$$\frac{\text{NSN}}{\text{NIIN}}$$
 NSN, i.e. (5305-01-574-1467).

When using this column to locate an item, ignore the first 4 digits of the NSN. However, the complete NSN should be used when ordering items by stock number.

- (2) **FIG. column.** This column lists the number of the figure where the item is identified/located. The figures are in numerical order in Section II and Section III.

- (3) **ITEM column.** The item number identifies the item associated with the figure listed in the adjacent FIG. column. This item is also identified by the NSN listed on the same line.

b. PART NUMBER INDEX. Part numbers in this index are listed by part number in ascending alphanumeric sequence (i.e., vertical arrangement of letter and number combination which places the first letter or digit of each group in order A through Z, followed by the numbers O through 9 and each following letter or digit in like order).

- (1) **FSCM column.** The Federal Supply Code for Manufacturer (FSCM) is a 5-digit numeric code used to identify the manufacturer, distributor, or Government agency, etc., that supplies the item.
- (2) **PART NUMBER column.** Indicates the primary number used by the manufacturer (individual, firm, corporation, or Government activity), which controls the design and characteristics of the item by means of its engineering drawings, specifications standards, and inspection requirements to identify an item or range of items.
- (3) **STOCK NUMBER column.** This column lists the NSN for the associated part number and manufacturer identified in the PART NUMBER and FSCM columns to the left.
- (4) **FIG. column.** This column lists the number of the figure where the item is identified/located in Sections II and III.
- (5) **ITEM column.** The item number is that number assigned to the item as it appears in the figure referenced in adjacent figure number column.

c. FIGURE AND ITEM NUMBER INDEX.

- (1) **FIG. column.** This column lists the number of the figure where the item is identified/located in Section II and III.
- (2) **ITEM column.** The item number is that number assigned to the item as it appears in the figure referenced in the adjacent figure number column.
- (3) **STOCK NUMBER column.** This column lists the NSN for the item.
- (4) **FSCM column.** The Federal Supply Code for Manufacturer (FSCM) is a 5-digit numeric code used to identify the manufacturer, distributor or Government agency, etc., that supplies the item.
- (5) **PART NUMBER column.** Indicates the primary number used by the manufacturer (individual, firm, corporation, or Government activity), which controls the design and characteristics of the item by means of its engineering drawings, specifications standards, and inspection requirements to identify an item or range of items.

5. SPECIAL INFORMATION.

a. USABLE ON CODE. The usable on code appears in the lower left corner of the Description column heading. Usable on codes are shown as "UOC:" in the Description Column (justified left) on the last line applicable item description/nomenclature. Uncoded items are applicable to all models.

b. ASSOCIATED PUBLICATIONS. The publication listed below pertains to the Air Compressor and its components.

PUBLICATION	SHORT TITLE
TM 5-4310-371-24P	Maintenance Manual for Air Compressor

6. HOW TO LOCATE REPAIR PARTS.

a. When National Stock Number or Part Number is NOT Known.

- (1) **First.** Using the table of contents, determine the assembly group or subassembly group to which the item belongs. This is necessary since figures are prepared for assembly groups and subassembly groups, and listings are divided into the same groups.
- (2) **Second.** Find the figure covering the assembly group or subassembly group to which the item belongs.
- (3) **Third.** Identify the item on the figure and note the item number.
- (4) **Fourth.** Refer to the Repair Parts List for the figure to find the part number for the item number noted on the figure.
- (5) **Fifth.** Refer to the Part Number Index to find the NSN, if assigned.

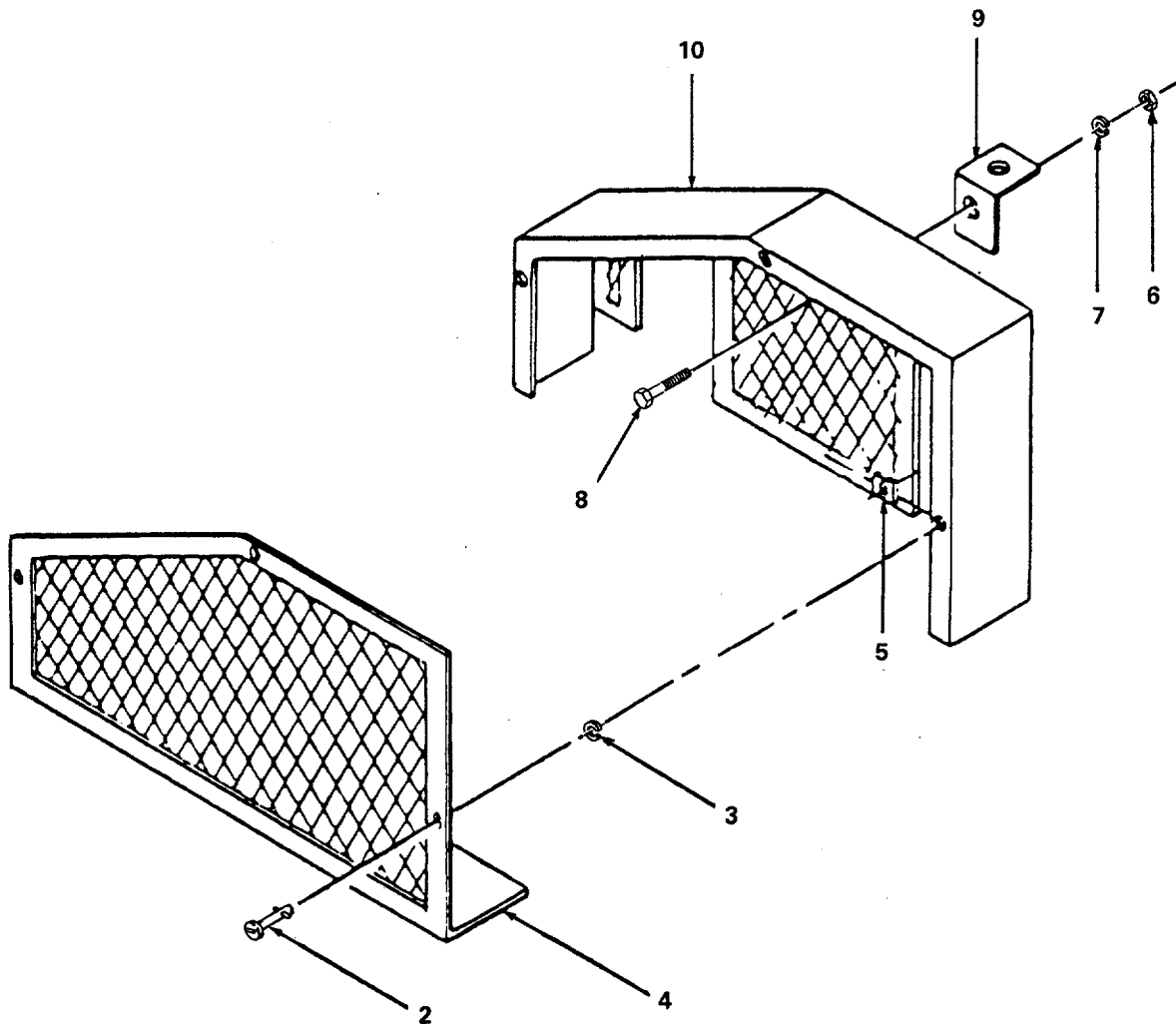
b. When National Stock Number or Part Number is Known:

- (1) **First.** Using the Index of National Stock Numbers and Part Numbers, find the pertinent National Stock Number or Part Number. The NSN index is in National Item Identification Number (NIIN) sequence (see 4a(1)). The part numbers in the Part Number index are listed in ascending alphanumeric sequence (see paragraph 4b). Both indexes cross-reference you to the illustration figure and item number of the item you are looking for.
- (2) **Second.** After finding the figure and item number, verify that the item is the one you are looking for, then locate the item number in the repair parts list for the figure.

7. ABBREVIATIONS.

Abbreviations	Explanation
ASSY	Assembly(ies)
FT	Feet (foot)
Hd	Head
HEX	Hexagon
IN	Inch(es)
LG	Long(length)
NO	Number(s)

1
2 THRU 10



4767-001

Figure 1. Belt Guard Assembly.

SECTION II

TM 5-4310-371-24P

(1) ITEM NO	(2) SMR CODE	(3) FSCM	(4) PART NUMBER	(5) DESCRIPTION AND USABLE ON CODES (UOC)	(6) QTY
				GROUP 01 BELT GUARD	
				FIG. 1 BELT GUARD ASSEMBLY	
1	XBOOO	19272	50-6749	GUARD,BELT,ASSEMBLY	1
2	PAOZZ	94222	85-11-340-16	STUD,TURNLOCK FASTE	5
3	PAOZZ	94222	85-34-101-20	WASHER,SPLIT	5
4	XBOZZ	19272	20-6163	FRONT,GUARD,BELT PART MUST BE	1
				REQN WITH PART 50-6749.	
5	PAOZZ	94222	85-47-101-15	RECEPTACLE,TURNLOCK	5
6	PAOZZ	96906	MS35649-2312	NUT,PLAIN,HEXAGON	6
7	XDOZZ	96906	MS35338-45	WASHER,LOCK	2
8	PAOZZ	96906	MS90726-34	BOLT,MACHINE	6
9	XBOZZ	19272	20-6173	SUPPORT,ANGLE PART MUST BE REQN.....	2
				WITH PART 50-6749.	
10	XBOZZ	19272	20-6164	REAR,GUARD,BELT PART MUST BE REQN	1
				WITH PART 50-6749.	

END OF FIGURE

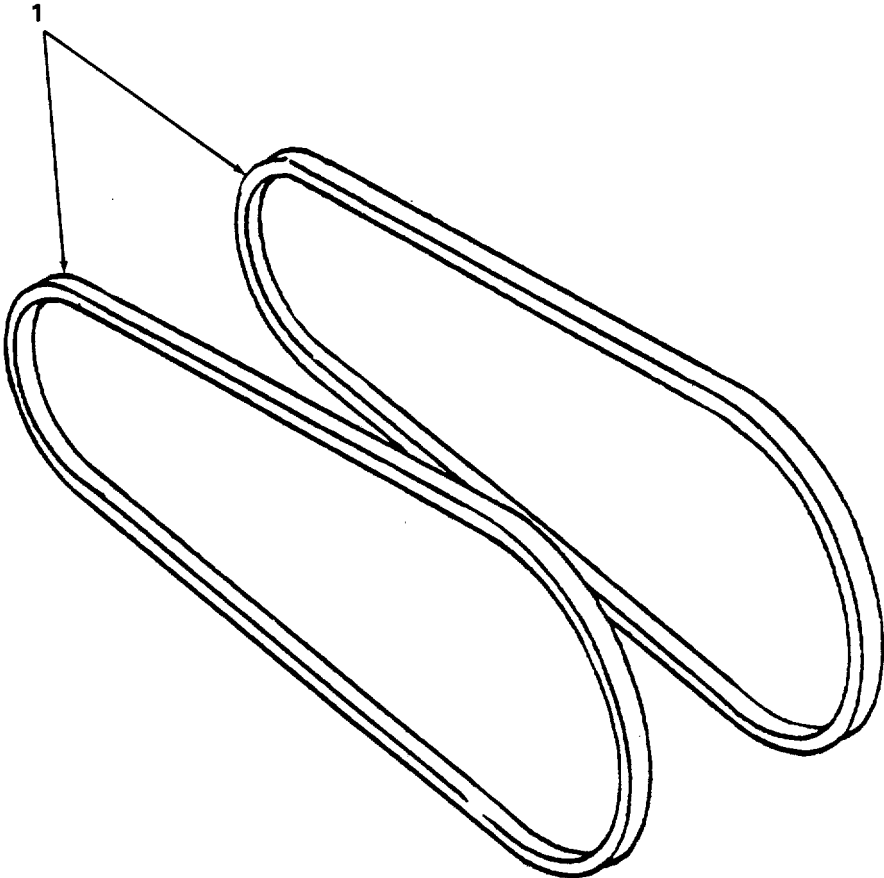


Figure 2. V-Belts.

4767-002

SECTION II

TM 5-4310-371-24P

(1) ITEM NO	(2) SMR CODE	(3) FSCM	(4) PART NUMBER	(5) DESCRIPTION AND USABLE ON CODES (UOC)	(6) QTY
				GROUP 01 BELT GUARD	
				FIG. 2 V-BELTS	
1	PAOZZ	96906	MS39256-2B81	BELTS,V.MATCHED SET	2

END OF FIGURE

1
2 THRU 27

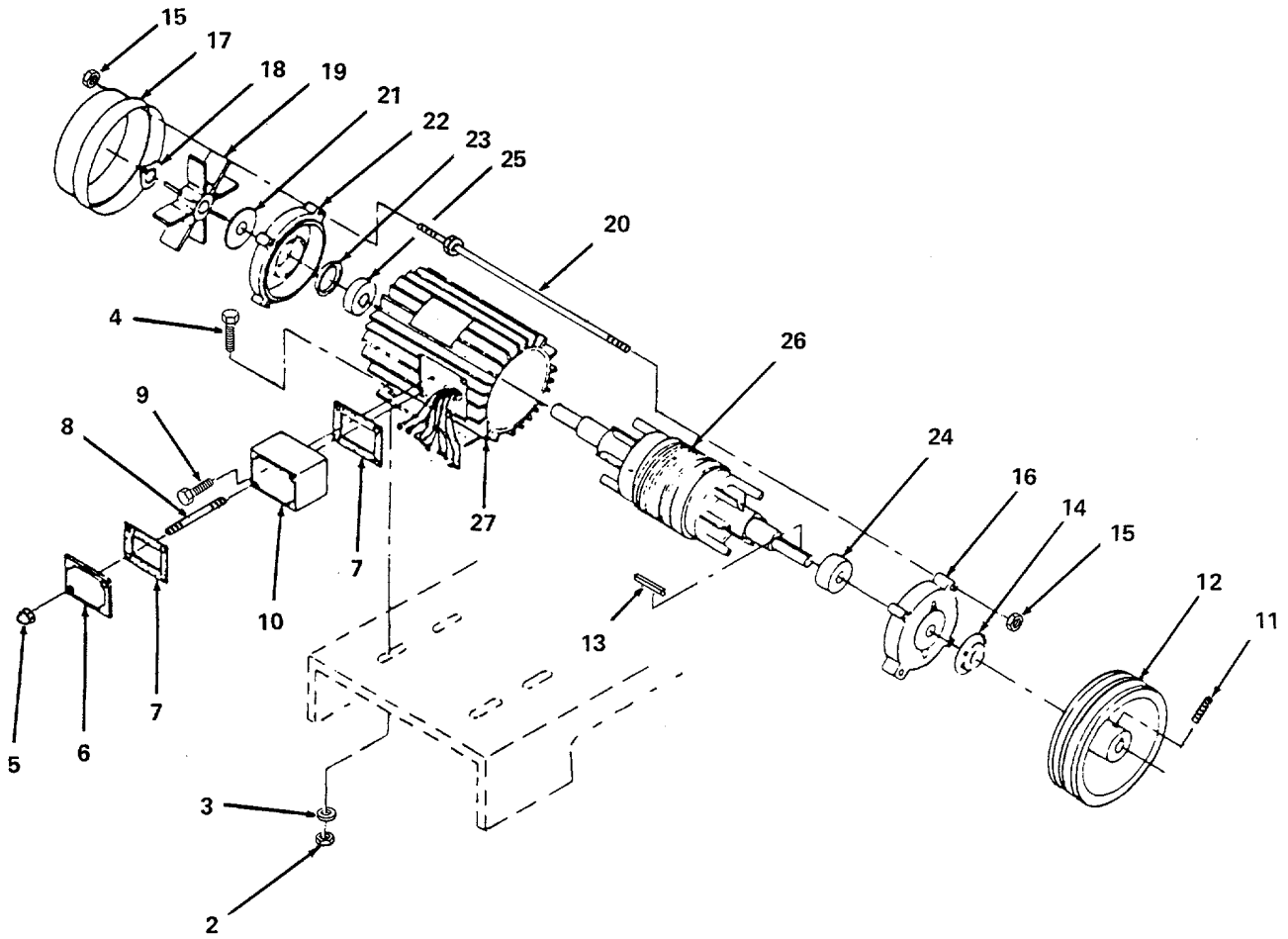


Figure 3. Motor Assembly.

4767-003

SECTION II

TM 5-4310-371-24P

(1) ITEM NO	(2) SMR CODE	(3) FSCM	(4) PART NUMBER	(5) DESCRIPTION AND USABLE ON CODES (UOC)	(6) QTY
				GROUP 02	ELECTRIC MOTOR & RELATED PARTS
				FIG. 3	MOTOR ASSEMBLY
1	PBOFH	36232	TV-3013-5-215T-0	MOTOR,ASSEMBLY	1
2	PAOZZ	96906	MS35649-2382	NUT,PLAIN,HEXAGON.....	4
3	XDOZZ	96906	M535338-45	WASHER,LOCK	4
4	PAOZZ	96906	M590275-60	SCREW,CAP,HEXAGON H	4
5	XBOZZ	36232	TV-3013-5-215T-4	NUT,ACORN,JUNCTION, BOX.....	2
				9	
6	XBOZZ	36232	TV-3013-5-215T-4	COVER,JUNCTION BOX.....	1
				7	
7	XBFZZ	36232	TV-3013-5-215T-4	GASKET,JUNCTION BOX	2
				6	
8	XBOZZ	36232	TV-3013-5-215T-4	STUD MOUNTING.....	2
				8	
9	XBFZZ	36232	TV-3013-5-215T-5	SCREW,GROUNDING	1
10	XBFZZ	36232	TV-3013-5-215T-4	BOX,JUNCTION	1
				5	
11	PAOZZ	11568	M-568	SETSCREW LEY.....	1
12	XBFZZ	11568	M-7011D	PULLEY,MOTOR	1
13	XBFZZ	36232	TV-3013-5-215T-2	KEY,MOTOR,PULLEY.....	1
				8	
14	XBFZZ	36232	TV-3013-5-215T-2	SLINGER, FRONT HOUSING.....	1
				6	
15	XBFZZ	36232	TV-3013-5-215T-2	NUT,HOUSING	8
				1	
16	XBFZZ	36232	TV-3013-5-215T-2	HOUSING,FRONT	1
				2	
17	XBFZZ	36232	TV-3013-5-215T-3	HOUSING,REAR	1
				9	
18	XDFZZ	79136	5100-98	RING,RETAINING	
19	XBFZZ	36232	TV-3013-5-215T-3	FAN	1
				8	
20	XBFZZ	36232	TV-3013-5-215T-3	BOLT,SLEEVE.....	4
				0	
21	XBFZZ	36232	TV-3013-5-215T-3	SLINGER, BELL HOUSING	1
				7	
22	XBFZZ	36232	TV-3013-5-215T-3	HOUSING,BELL.....	1
				6	
23	PBFZZ	36232	TV-3013-5-215T-3	WASHER,SPRING TENSI	1
				5A	
24	PAFZZ	36232	TV-3013-5-215T-2	BEARING,ANTI-FRICTI	1
				5	
25	XDFZZ	36232	M-9300-37	BEARING,BALL,ANNULA	1
26	XBFZZ	36232	TV-3013-5-215T-2	ROTOR,ASSY	1
				9	
27	XBFZZ	36232	TV-3013-5-215T-4	STATOR	1
				1	

END OF FIGURE

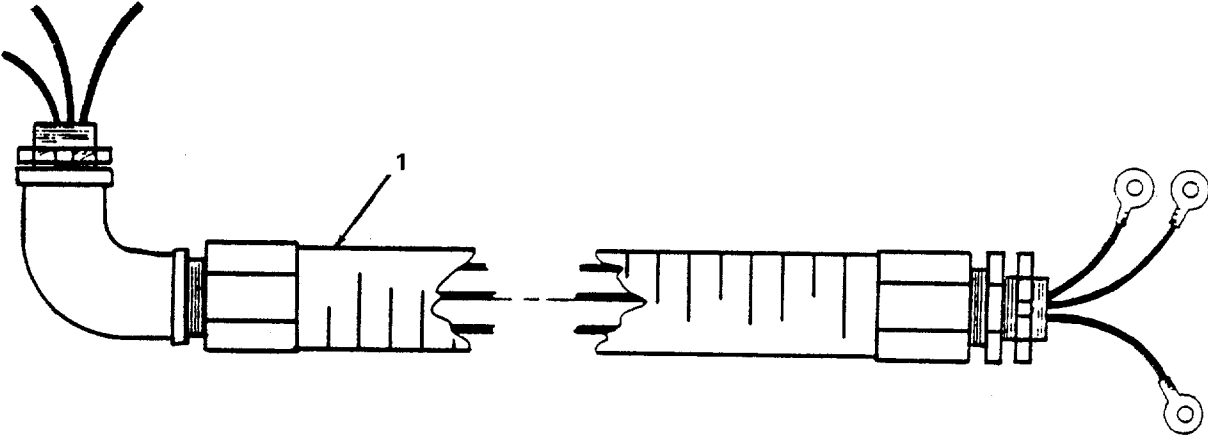


Figure 4. Motor Cable Assembly.

4767-004

SECTION II

TM 5-4310-371-24P

(1) ITEM NO	(2) SMR CODE	(3) FSCM	(4) PART NUMBER	(5) DESCRIPTION AND USABLE ON CODES (UOC)	(6) QTY
				GROUP 02	
				ELECTRIC MOTOR & RELATED PARTS	
				FIG. 4	
				MOTOR CABLE ASSEMBLY	
1	XDFZZ	19272	50-6747	CABLE AND CONDUIT A	1

END OF FIGURE

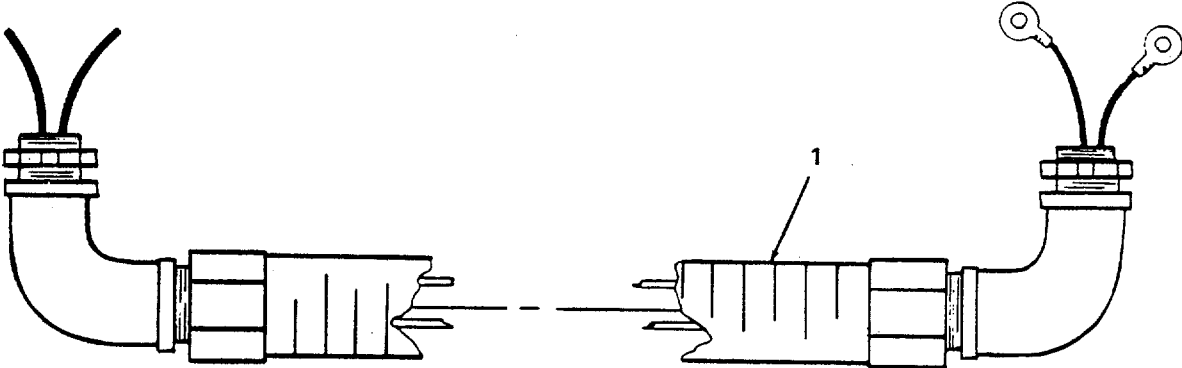


Figure 5. Motor Starter Assembly.

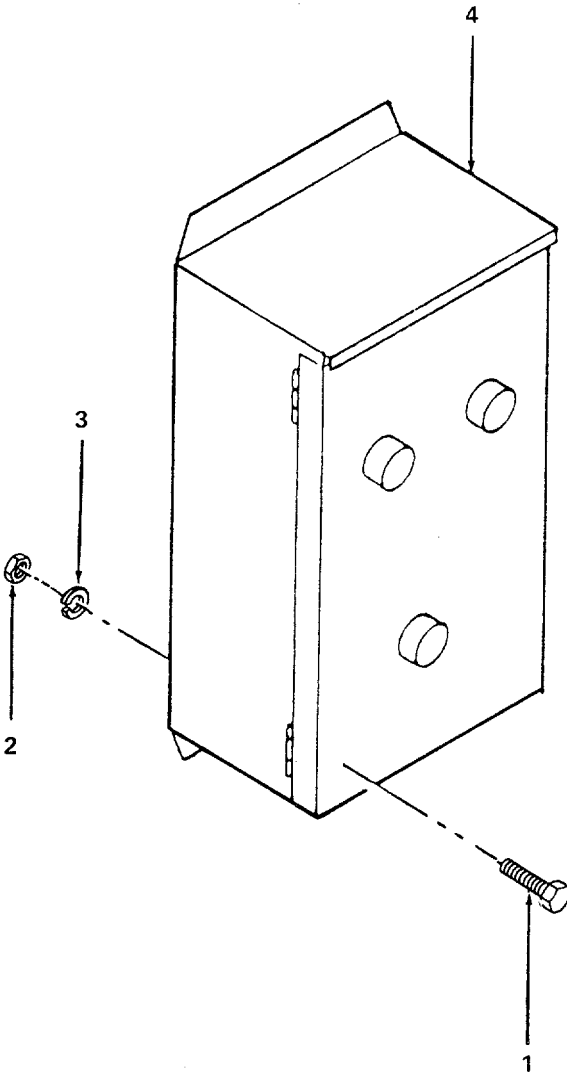
4767-005

SECTION II

TM 5-4310-371-24P

(1) ITEM NO	(2) SMR CODE	(3) FSCM	(4) PART NUMBER	(5) DESCRIPTION AND USABLE ON CODES (UOC)	(6) QTY
				GROUP 02	ELECTRIC MOTOR & RELATED PARTS
				FIG. 5	MOTOR STARTER ASSEMBLY
1	PAOZZ	96906	MS90726-34	BOLT,MACHINE	2
2	PAOZZ	96906	MS35649-2312	NUT,PLAIN,HEXAGON.....	2
3	XDOZZ	96906	MS35338-45	WASHER,LOCK	6
4	PAFZZ	19272	13-0867	STARTER,MOTOR.....	1

END OF FIGURE



4767-006

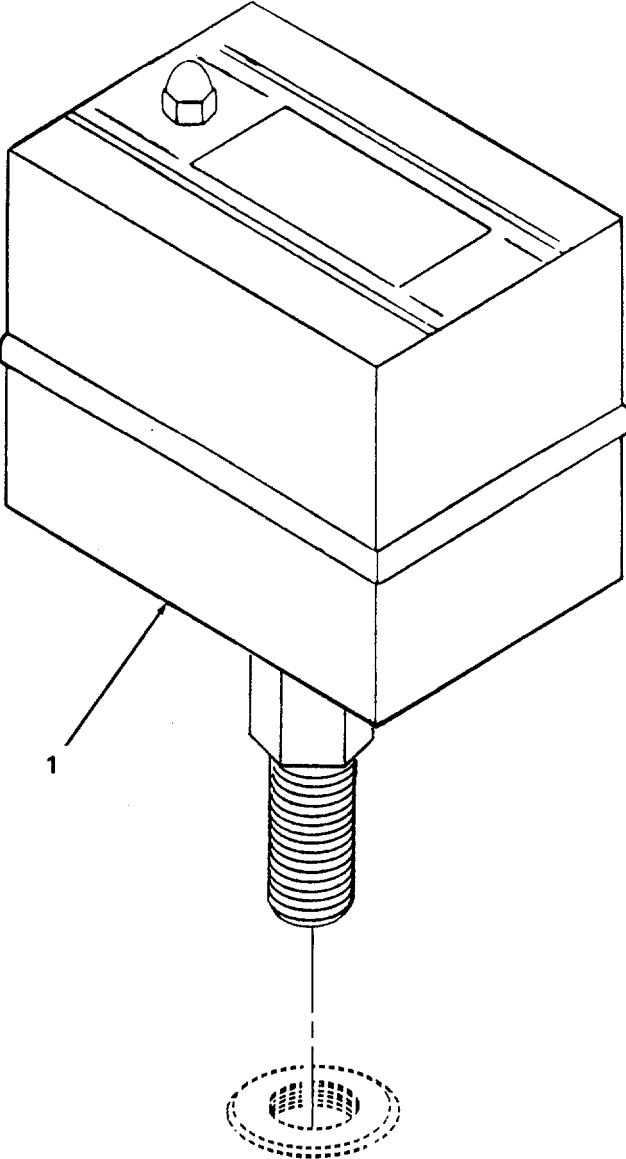
Figure 6. Pressure Switch Cable Assembly.

SECTION II

TM 5-4310-371-24P

(1) ITEM NO	(2) SMR CODE	(3) FSCM	(4) PART NUMBER	(5) DESCRIPTION AND USABLE ON CODES (UOC)	(6) QTY
				GROUP 02	ELECTRIC MOTOR & RELATED PARTS
				FIG. 6	PRESSURE SWITCH CABLE ASSEMBLY
1 XDFZZ		19272	50-6748	CABLE ASSEMBLY,POWE CH	1

END OF FIGURE



4767-007

Figure 7. Pressure Switch Assembly.

SECTION II

TM 5-4310-371-24P

(1) ITEM NO	(2) SMR CODE	(3) FSCM	(4) PART NUMBER	(5) DESCRIPTION AND USABLE ON CODES (UOC)	(6) QTY
				GROUP 02 ELECTRIC MOTOR & RELATED PARTS	
				FIG. 7 PRESSURE SWITCH ASSEMBLY	
1	PAFZZ	51917	9013GHG-2B	SWITCH,PRESSURE 2HP-IPHASE 3HP 3PHASE,PRESS.RANGE:40-200PSI,DIFF: 18-40PSI, FACTORY SETTING:175- 195PSI,NEMA SIZE 1 ENCL-FUNGUS PROOF, FITTING SIZE-1/4 IN.NPTF..	1

END OF FIGURE

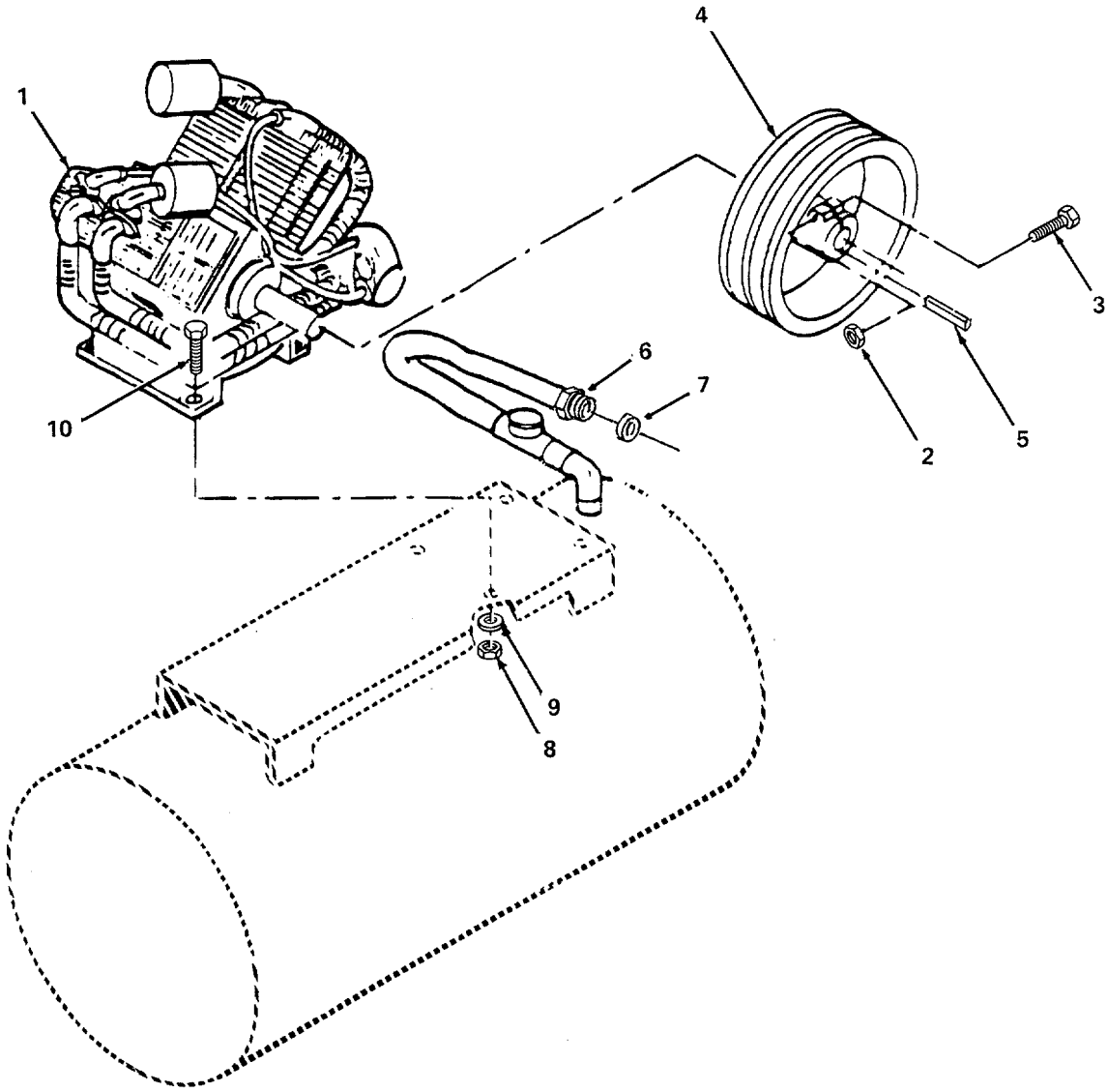
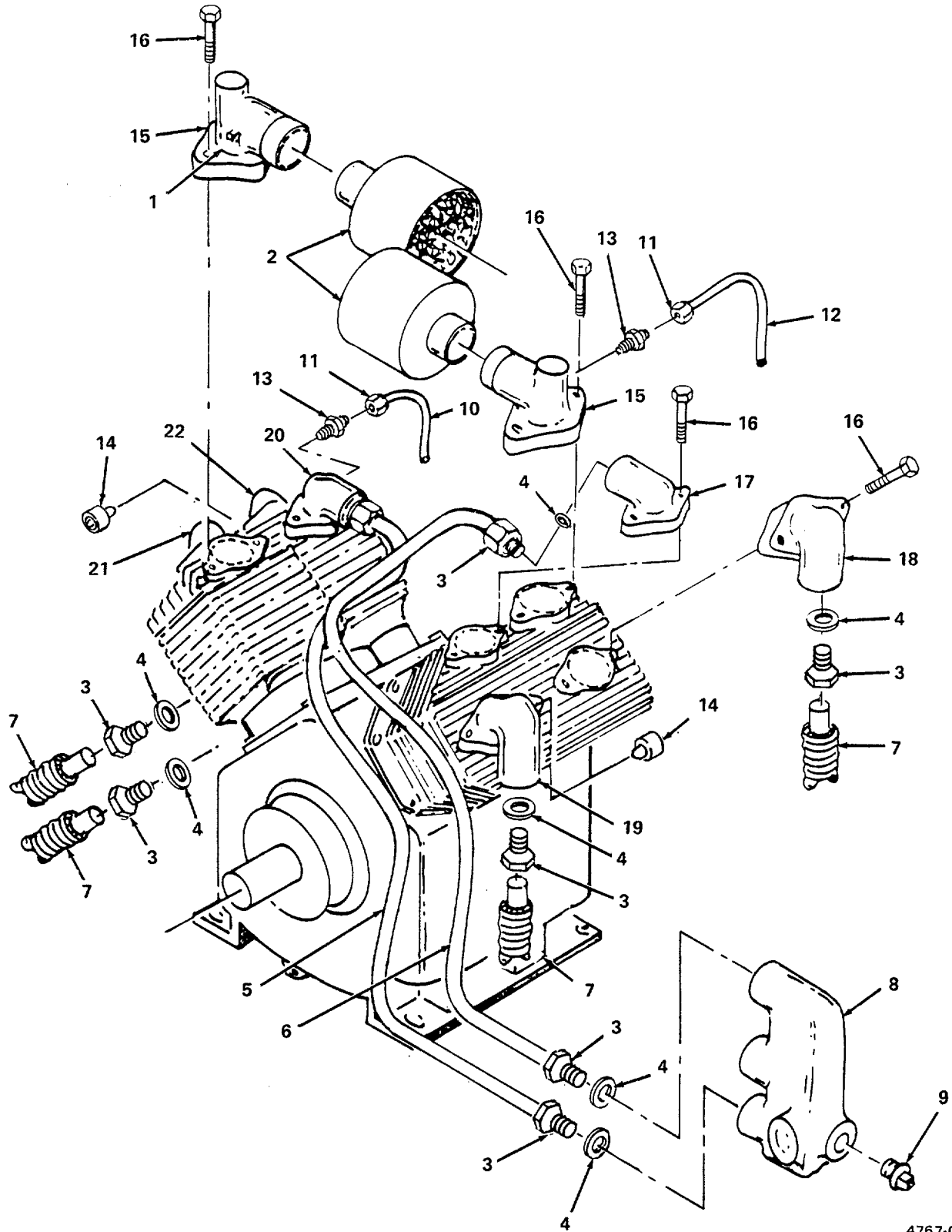


Figure 8. Compressor Pump.

SECTION II

(1) ITEM NO	(2) SMR CODE	(3) FSCM	(4) PART NUMBER	(5) DESCRIPTION AND USABLE ON CODES (UOC)	(6) QTY
				GROUP 03 AIR COMPRESSOR ASSEMBLY	
				FIG. 8 COMPRESSOR PUMP	
1	PBOFF	11568	R-30B	PUMP,COMPRESSOR	1
2	XDOZZ	96906	M551967-15	NUT,PLAIN,HEXAGON	1
3	PBOZZ	11568	RE-20-105	BOLT,FLYWHEEL	1
4	XDOZZ	11568	NR-36-7B	GEAR,SPUR	1
5	PAOZZ	11568	RE-20-8	KEY,MACHINE	1
6	PADZZ	11568	SE-5-41	NUT,COMPRESSION	1
7	PAOZZ	11568	SE-5-42	SLEEVE,COMPRESSION,.....	16
8	XDOZZ	11568	M649	NUT,PLAIN HEXAGON.....	4
9	PAOZZ	96906	M535340-47	WASHER,LOCK	4
10	PAFZZ	96906	M590725-90	SCREW,CAP,HEXAGON H	4

END OF FIGURE



4767-009

Figure 9. Tubing and Manifold Assemblies.

SECTION II

TM 5-4310-371-24P

(1) ITEM NO	(2) SMR CODE	(3) FSCM	(4) PART NUMBER	(5) DESCRIPTION AND USABLE ON CODES (UOC)	(6) QTY
				GROUP 03 AIR COMPRESSOR ASSEMBLY	
				FIG. 9 TUBING AND MANIFOLD ASSEMBLY	
1	PAOZZ	11568	M-432	SETSCREW	2
2	XBOZZ	11568	Z-828	AIR CLEANER,INTAKE	2
3	PAOZZ	11568	SE-5-41	INVERTED NUT,TUB C	16
4	PBOZZ	11568	SE-5-42	SLEEVE,COMPRESSION,.....	1
5	PAOZZ	11568	M1480	TUBE,BENT,METALLIC.....	1
6	PAOZZ	11568	M-1481	TUBE,INTERCOOLER.....	1
7	XBOZZ	11568	M-1591	TUBE,AFTERCOOLER,RH.....	1
8	PBFZZ	11568	NR-36-44	MANIFOLD,AFTERCOOLE	1
9	PAOZZ	81348	WW-P-471	PLUG,PIPE	1
10	XBOZZ	11568	M-1592	TUBE,AFTERCOOLER,LH	1
11	PAOZZ	11568	M-27	INVERTED NUT,TUBE C PART MUST BE..... REQN WITH PART Z-508 PART OF KIT P/N 4-2 060102B .	1
12	XBOZZ	11568	SB-2025B	TUBE,RELEASE VALVE PART MUST BE..... REQN WITH PART Z-508.	1
13	PAOZZ	96906	MS39169-15	.ADAPTER,STRAIGHT,PI	2
14	XBOZZ	11568	UB-375B	TUBE,BREATHER	2
15	PAFZZ	75336	125B1-4-75PSI	VALVE,SAFETY RELIEF	2
16	PAOZZ	11568	P-5005	SCREW,CAP,HEXAGON H	16
17	PAFZZ	11568	SE-5-2A	MANIFOLD,INTAKE.....	1
18	PAQZZ	11568	RE-10-2E	ELBOW,FLANGE TO TUB FLANGE TO TUBE	1
19	PBFZZ	11568	NR-2B	MANIFOLD,COMPRESSOR	1
20	PBFZZ	11568	SE-5-2B	ELBOW,FLANGE TO TUB FLANGE TO TUBE	1
21	PAOZZ	11568	RE-10-2E	ELBOW,FLANGE TO TUB FLANGE TO TUBE	1
22	PBFZZ	11568	NR-2B	MANIFOLD,COMPRESSOR E.....	1

END OF FIGURE

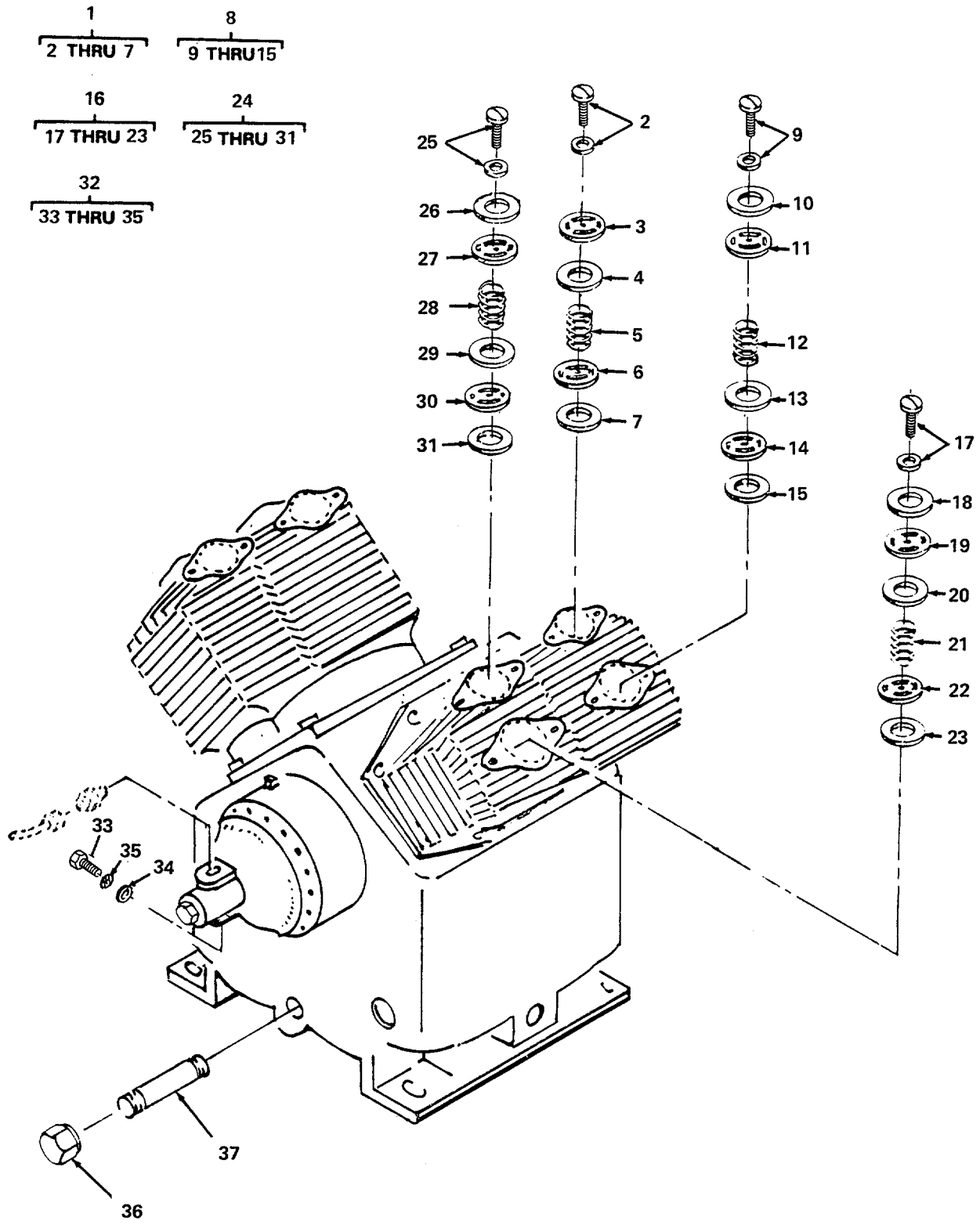


Figure 10. Valve Assemblies, Intake and Exhaust.

SECTION II

(1) ITEM NO	(2) SMR CODE	(3) FSCM	(4) PART NUMBER	(5) DESCRIPTION AND USABLE ON CODES (UOC)	(6) QTY
				GROUP 03 AIR COMPRESSOR ASSEMBLY	
				FIG. 10 VALVE ASSEMBLIES, INTAKE AND EXHAUST	
1	PAFZZ	11568	Z-812	VALVE ASSEMBLY, INTAKE.....	2
				SPRING,VALVE (2) 10-5	
2	XAFZZ	11568	P-4544A	SCREW, ASSEMBLED WASHER	2
3	XAFZZ	11568	RE-14-71	SEAT,INTAKE,VALVE	2
4	XAFZZ	11568	RE-14-70	DISC,VALVE	2
5	XAFZZ	11568	RE-14-58	SPRING,VALVE PART OF KIT P/N Z-812	2
6	XAFZZ	11568	RE-14-72	CAGE,INTAKE,VALVE.....	2
7	XAFZZ	11568	P-4134A	GASKET,VALVE	2
8	PAFZZ	11568	Z-813	VALVE ASSEMBLY, EXHAUST	2
9	XAFZZ	11568	P-4543A	SCREW,ASSEMBLED WAS ASSEMBLED	2
				WASHER	
10	XAFZZ	11568	P-4135A	GASKET,VALVE	2
11	XAFZZ	11568	RE-10-51A	SEAT,VALVE	1
12	XAFZZ	11568	RE-10-59A	SPRING,VALVE	1
13	XAFZZ	11568	RE-10-61	DISC,VALVE	2
14	XAFZZ	11568	RE-10-65A	SEAT,EXHAUST,VALVE	2
15	XAFZZ	11568	P-4135A	GASKET,VALVE	2
16	PAFZZ	11568	Z-113	VALVE,CHECK INTAKE	2
17	XAFZZ	11568	RE-7-81	SCREW,ASSEMBLED WAS FILLISTER	2
				HEAD,STEEL,WITH WASHER	
18	XAFZZ	11568	P-4137A	GASKET,VALVE	2
19	XAFZZ	11568	RE-7-56A	SEAT,VALVE	2
20	XAFZZ	11568	RE-10-62	DISC,VALVE	2
21	XAFZZ	11568	RE-7-60	SPRING,VALVE.....	2
22	XAFZZ	11568	RE-7-52A	CAGE,INTAKE VALVE.....	2
23	XAFZZ	11568	P-4136A	GASKET,VALVE.....	2
24	PAFZZ	11568	Z-115	VALVE ASSEMBLY,DISC EXHAUST.....	2
25	XAFZZ	11568	RE-7-81	SCREW,ASSEMBLED WAS FILLISTER	2
				HEAD,STEEL WITH WASHER	
26	XAFZZ	11568	P-4137A	GASKET VALVE.....	2
27	XAFZZ	11568	RE-7-53A	CAGE,EXHAUST,VALVE.....	2
28	XAFZZ	11568	RE-7-60	SPRING,VALVE.....	2
29	XAFZZ	11568	RE-10-62	DISC,VALVE.....	2
30	XAFZZ	11568	RE-7-57A	SEAT,VALVE	2
31	XAFZZ	11568	P-4136A	GASKET,VALVE.....	2
32	PBOZZ	11568	Z-60A	BREATHER ASSEMBLY SY.....	1
33	XBOZZ	11568	M-1046	BODY, MUFFLER,UNLOADER.....	1
34	XDOZZ	11568	M-97A	SCREEN,MUFFLER,COMP	1
35	XBOZZ	11568	M-98A	SCREEN.....	1
36	PBCZZ	11568	M-461	CAP,PIPE	1
37	PBOZZ	91906	MS51953-63B	NIPPLE,PIPE	1
				INVERTED NUT,TUBE C(1) 9-11	

END OF FIGURE

4
5 THRU 11

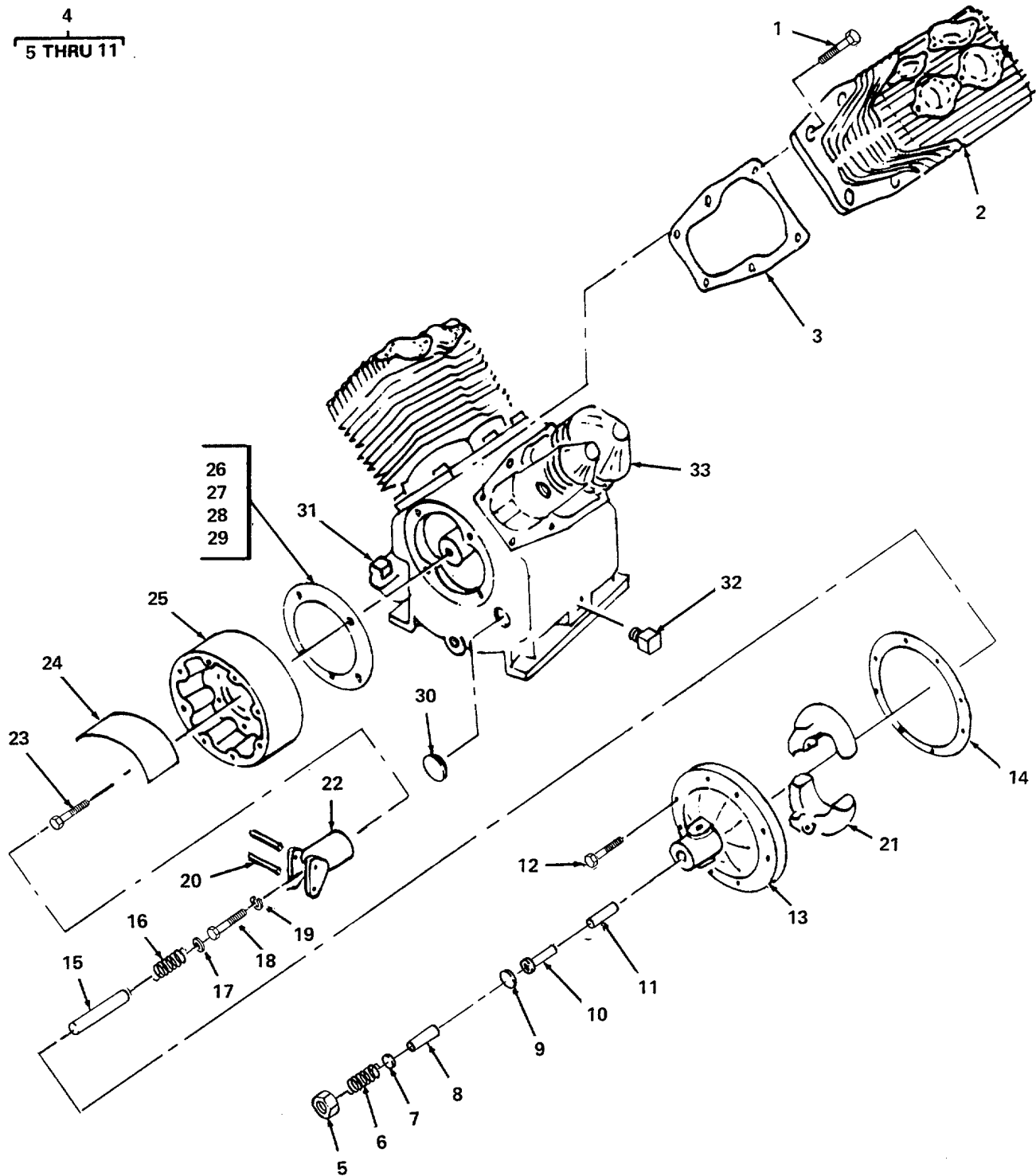


Figure 11. Cylinder and Crankcase Assembly.

SECTION II

(1) ITEM NO	(2) SMR CODE	(3) FSCM	(4) PART NUMBER	(5) DESCRIPTION AND USABLE ON CODES (UOC)	(6) QTY
				GROUP 03 AIR COMPRESSOR ASSEMBLY	
				FIG. 11 CYLINDER AND CRANKCASE ASSEMBLY	
1	PAOZZ	96906	M590727-87	SCREW,CAP,HEXAGON H	12
2	XBHZZ	11568	NR-14-6B	CYLINDER	2
3	PAHZZ	11568	NR-29-A	GASKET CYLINDER	2
4	PBOZZ	11568	Z-124B	PARTS KIT,CHECK VAL RELEASE	1
5	PBOZZ	11568	SE-5-85	NUT,PLAIN,CAP	1
6	PAOZZ	11568	SE-5-91	SPRING,HELICAL,COMP	1
7	PBOZZ	00041	AK6	BALL,BEARING	1
8	PBOZZ	11568	SE-30-101	SEAT,VALVE	1
9	PBOZZ	11568	H-122	GASKET	1
10	PBOZZ	11568	SE-5-97	BEARING,SLEEVE	1
11	PBOZZ	11568	SE-5-86B	PLUNGER,DETENT.....	1
12	PAOZZ	11568	SE-14-84	SCREW,MACHINE	8
13	XDFZZ	11568	SE-30-100	COVER,ACCESS.....	1
14	PBFZZ	11568	SE-30-89	GASKET	1
15	PBFZZ	11568	SE-5-87	GUIDE S P R I N G	1
16	PAFZZ	11568	SE-5-90	SPRING, HELICAL,COMPRESSI ON	1
17	PAOZZ	11568	SE-5-88	WASHER,FLAT	1
18	PAOZZ	96906	M596727-87	SCREW,CAP,HEXAGON H	1
19	XDOZZ	96906	MS35338-47	WASHER LOCK	1
20	PBFZZ	11568	SE-5-92A	PIN,SPRING	2
21	PBFZZ	11568	SE-5-82A	WEIGHT,GOVERNOR.....	2
22	PBFZZ	11568	SE-5-83B	SPINDLE GO VERNOR	1
23	PAOZZ	96906	M590728-87	.SCREW,CAP,HEXAGON H	4
24	XBFFZZ	11568	NR-36-104	PLATE,GOV.BA FLE	1
25	XBOZZ	11568	NR-36-113	.HOUSING, GOVERNOR	1
26	XBFFZZ	11568	SE-30-30	GASKET GOV 1/32 IN PART OF KIT P/N	1
				Z-30-30.	
27	XBFFZZ	11568	SE-30-30A	GASKET GOV .005 PART OF KIT P/N Z-.....	1
				30-30.....	
28	XBFFZZ	11568	SE-30-30B	GASKET,GOV .010 PART OF KIT P/N Z-.....	1
				30-30.....	
29	XBFFZZ	11568	SE-30-30C	GASKET GOV .015 PART OF KIT P/N Z-.....	1
				30-30.....	
30	PBFZZ	11568	RE-7-14	INDICATOR,SIGHT,LIQ OIL LEVEL	1
31	XBOZZ	11568	M-459	PLUG,PIPE, OIL FILLER	1
32	XBCZZ	11568	M-484	PLUG,PIPE, CRANKCASE	1
33	XBFFZZ	11568	M-1898	CRANKCASE.....	1
	PAFZZ	11568	Z-30-30	GASKET SET	1
				GASKET GOV 1/32 IN (1) 11-26	
				GASKET GOV .005 (1) 11-27	
				GASKET GOV .015 (1) 11-29	
				GASKET,GOV .010 (1) 11-28	

END OF FIGURE

SECTION II					
(1)	(2)	(3)	(4)	(5)	(6)
ITEM NO	SMR CODE	FSCM	PART NUMBER	DESCRIPTION AND USABLE ON CODES (UOC)	QTY
				GROUP 03	AIR COMPRESSOR ASSEMBLY
				FIG. 12	PISTON ROD, AND CRANKSHAFT ASSEMBLY
1	XBFZZ	11568	R-10-102	RING,RETAINING PISTON PIN	4
2	PBFZZ	11568	R-10-21	PIN,STRAIGHT,HEADLE	2
3	PAFZZ	11568	Z-189B	RING SET,PISTON	2
4	PAFZZ	11568	R-10-4	PISTON,H.P	2
5	XBFZZ	11568	R-10-102	RING,RETAINING PISTON PIN	4
6	PBFZZ	11568	R-10-21	PIN,PISTON	2
7	PAFZZ	11568	Z-179C	RING SET,PISTON	2
8	PBFZZ	11568	R-15-4	PISTON,COMPRESSOR	2
9	PBFZZ	11568	Z-752	CONNECTING ROD,PIST	4
10	XBFZZ	11568	M-1583	BOLT,CONNECTING ROD	8
11	XBFZZ	11568	M-1584	ROD,CONNECTING	4
12	PBFZZ	11568	R-10-37	BEARING,SLEEVE	4
13	XBFZZ	11568	R-10-24	DIPPER,OIL	4
14	PBFZZ	11568	R-30-5	CRANKSHAFT,COMPRESS COMPRESSOR	1
15	PAFZZ	11568	ZNR-20-16	BEARING,ROLLER,TAPEMAIN,FLYWHEEL.....	1
				END.	
16	PAFZZ	11568	OS-N36A	SEAL,PLAIN ENCASED	1
17	PAFZZ	11568	NR-20-16	CUP,TAPERED ROLLER BEARING	1
18	XAFZZ	11568	NR-20-16A	CONE AND ROLLERS	1
19	PAFZZ	11568	ZNR-36-16	BEARING ASSEMBLY, MAIN,GOVERNOR	1
				END.	
20	PAFZZ	11568	NR-36-16	CUP,TAPERED ROLLER TAPERED ROLLER	1
21	PAFZZ	11568	NR-36-16A	CONE AND ROLLERS,TA	1

END OF FIGURE

1
2 THRU 12

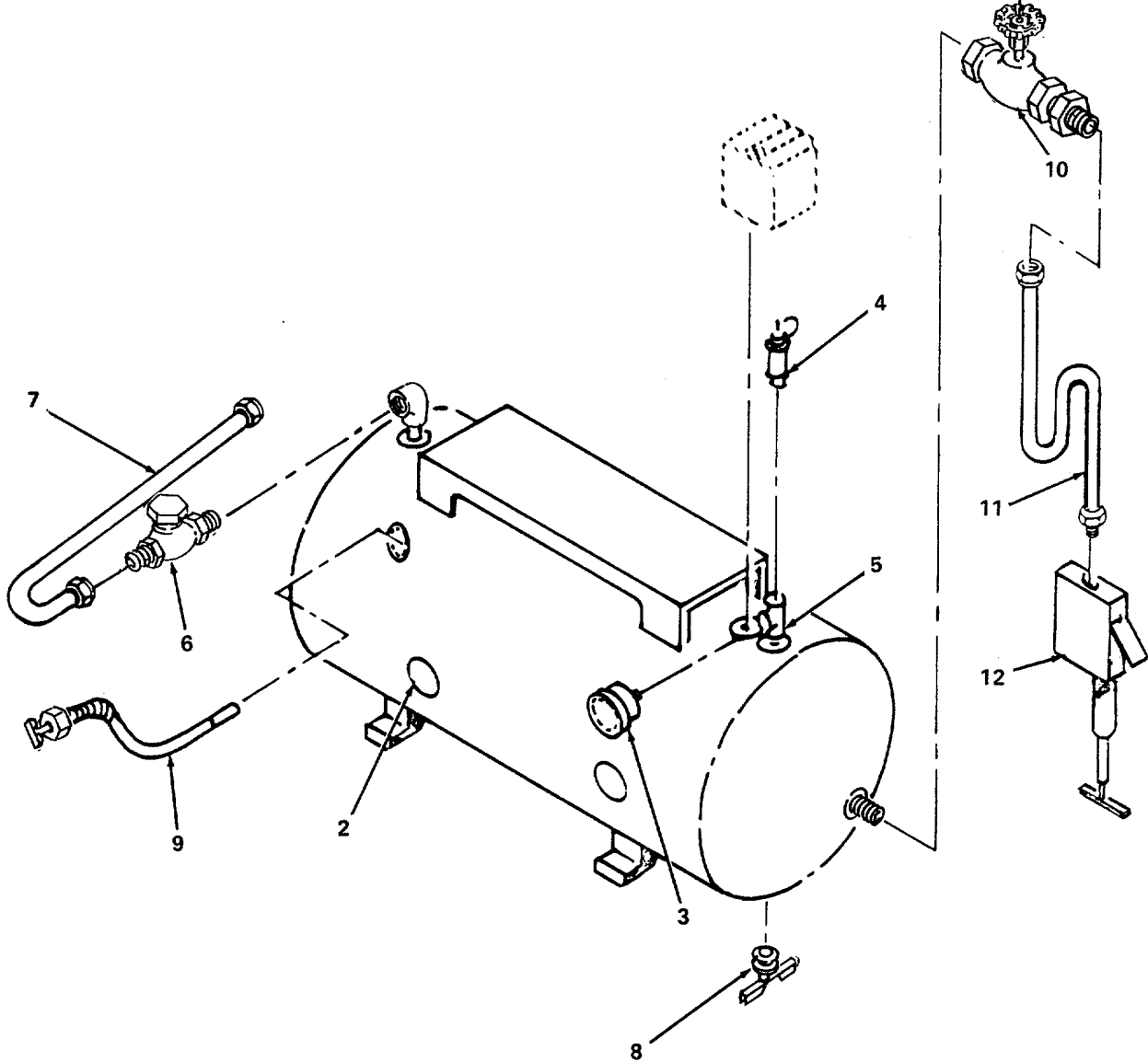


Figure 13. Air Receiver Assembly.

SECTION II

(1) ITEM NO	(2) SMR CODE	(3) FSCM	(4) PART NUMBER	(5) DESCRIPTION AND USABLE ON CODES (UOC)	(6) QTY
				GROUP 04 AIR RECEIVER	
				FIG. 13 AIR RECEIVER ASSEMBLY	
1	XBFZZ	19272	50-6718	RECEIVER ASSEMBLY, AIR	1
2	XBOZZ	11568	P-1400D	RECEIVER,AIR	1
3	PBOZZ	11568	M-519G	GAGE,PRESSURE	1
4	PBFZZ	11568	Z-206-200 .	VALVE,SAFETY RELIEF	1
5	XBFZZ	19272	5-03-222-8	TEE,MOUNTING	1
6	PAOZZ	11568	Z-57C	VALVE, CHECK	1
7	PBFZZ	11568	HR-10-8	TUBE,EXHAUST	1
8	PAOZZ	11568	M-521	COCK,DRAIN	1
9	PBFZZ	11568	M-434H	DRAIN,TANK,MANUAL	1
10	PAOZZ	11568	M-524	VALVE,GLOBE	1
11	PAOZZ	19272	50-6761	HOSE ASSEMBLY,NONME	1
12	PAOZZ	14896	61J2-1506	GAGE, AIR PRESSURE	1

END OF FIGURE

CROSS-REFERENCE INDEXES

NATIONAL STOCK NUMBER INDEX

STOCK NUMBER	FIG.	ITEM	STOCK NUMBER	FIG.	ITEM
5305-00-042-9478	8	10			
5310-00-056-3395	3	2			
5305-00-071-1788	11	23			
3110-00-100-5304	12	15			
4730-00-142-1593	9	11			
4730-00-195-5708	9	18			
	9	21			
4310-00-208-7126	12	8			
4820-00-209-1775	13	10			
5306-00-225-9089	1	8			
	5	1			
3030-00-246-0184	2	1			
4730-00-247-9463	9	9			
4730-00-270-6113	8	7			
	9	4			
4730-00-273-8561	9	13			
5325-00-281-9126	1	2			
4310-00-403-0888	12	9			
4820-00-421-6984	9	15			
4310-00-477-7986	9	8			
4310-00-477-8001	12	14			
5340-00-625-6747	11	11			
4820-00-625-6749	11	8			
4310-00-631-3396	10	24			
4820-00-631-3397	10	16			
5310-00-655-9370	8	9			
5305-00-709-8523	11	1			
5310-00-822-8525	1	3			
5310-00-829-9981	1	6			
	5	2			
2990-00-863-0926	11	22			
5325-00-998-3351	1	5			
5305-01-088-6838	9	16			
4710-01-105-2545	9	5			
6685-01-111-0147	13	3			
4820-01-111-4756	11	4			
6105-01-111-5769	3	1			
4310-01-111-5785	12	4			
4710-01-111-7524	9	6			
4710-01-111-7932	13	7			
4320-01-112-3584	8	1			
4720-01-112-3683	13	9			
3110-01-113-0636	12	19			
5306-01-113-5145	8	3			
3110-01-194-5827	3	24			
5310-01-194-6322	3	23			
5930-01-199-8910	7	1			
6110-01-199-8921	5	4			
4720-01-208-4328	13	11			

CROSS-REFERENCE INDEXES

FSCM	PART NUMBER	PART NUMBER INDEX		FIG.	ITEM
			STOCK NUMBER		
00041	AK6			11	7
11568	H-122			11	9
11568	HR-10-8		4710-01-111-7932	13	7
11568	M-1046			10	33
11568	M-1481		4710-01-111-7524	9	6
11568	M-1583			12	10
11568	M-1584			12	11
11568	M-1591			9	7
11568	M-1592			9	10
11568	M-1898			11	33
11568	M-27		4730-00-142-1593	9	11
11568	M-432			9	1
11568	M-434H		4720-01-112-3683	13	9
11568	M-459			11	31
11568	M-461			10	36
11568	M-484			11	32
11568	M-519G		6685-01-111-0147	13	3
11568	M-521			13	8
11568	M-524		4820-00-209-1775	13	10
11568	M-568			3	11
11568	M-7011D			3	12
36232	M-9300-37			3	25
11568	M-97A			10	34
11568	M-98A			10	35
96906	M535338-45			1	7
				3	3
				5	3
96906	MS35338-47			11	19
96906	MS35340-47		5310-00-655-9370	8	9
96906	MS35649-2312		5310-00-829-9981	1	6
				5	2
96906	MS35649-2382		5310-00-056-3395	3	2
96906	MS39169-15		4730-00-273-8561	9	13
96906	MS39256-2B81		3030-00-246-0184	2	1
91906	MS51953-63B			10	37
96906	MS51967-15			8	2
96906	MS90275-60			3	4
96906	MS90725-90		5305-00-042-9478	8	10
96906	MS90726-34		5306-00-225-9089	1	8
				5	1
96906	MS90727-87		5305-00-709-8523	11	1
96906	MS90728-87		5305-00-071-1788	11	23
96906	MS96727-87			11	18
11568	M1480		4710-01-105-2545	9	5
11568	M649			8	8
11568	NR-14-6B			11	2
11568	NR-2B			9	19
				9	22
11568	NR-20-16			12	17
11568	NR-20-16A			12	18
11568	NR-29-A			11	3

CROSS-REFERENCE INDEXES

FSCM	PART NUMBER INDEX		FIG.	ITEM
	PART NUMBER	STOCK NUMBER		
11568	NR-36-104		11	24
11568	NR-36-113		11	25
11568	NR-36-16		12	20
11568	NR-36-16A		12	21
11568	NR-36-44	4310-00-477-7986	9	8
11568	NR-36-7B		8	4
11568	OS-N36A		12	16
11568	P-1400D		13	2
11568	P-4134A		10	7
11568	P-4135A		10	10
			10	15
11568	P-4136A		10	23
			10	31
11568	P-4137A		10	18
			10	26
11568	P-4543A		10	9
11568	P-4544A		10	2
11568	P-5005	5305-01-088-6838	9	16
11568	R-10-102		12	1
			12	5
11568	R-10-21		12	2
			12	6
11568	R-10-24		12	13
11568	R-10-37		12	12
11568	R-10-4	4310-01-111-5785	12	4
11568	R-15-4	4310-00-208-7126	12	8
11568	R-30-5	4310-00-477-8001	12	14
11568	R-30B	4320-01-112-3584	8	1
11568	RE-10-2E	4730-00-195-5708	9	18
			9	21
11568	RE-10-51A		10	11
11568	RE-10-59A		10	12
11568	RE-10-61		10	13
11568	RE-10-62		10	20
			10	29
11568	RE-10-65A		10	14
11568	RE-14-58		10	5
11568	RE-14-70		10	4
11568	RE-14-71		10	3
11568	RE-14-72		10	6
11568	RE-20-105	5306-01-113-5145	8	3
11568	RE-20-8		8	5
11568	RE-7-14		11	30
11568	RE-7-52A		10	22
11568	RE-7-53A		10	27
11568	RE-7-56A		10	19
11568	RE-7-57A		10	30
11568	RE-7-60		10	21
			10	28
11568	RE-7-81		10	17
			10	25

CROSS-REFERENCE INDEXES

FSCM	PART NUMBER	PART NUMBER INDEX		FIG.	ITEM
			STOCK NUMBER		
11568	SB-250B			9	12
11568	SE-14-84			11	12
11568	SE-30-100			11	13
11568	SE-30-101		4820-00-625-6749	11	8
11568	SE-30-30			11	26
11568	SE-30-30A			11	27
11568	SE-30-30B			11	28
11568	SE-30-30C			11	29
11568	SE-30-89			11	14
11568	SE-5-2A			9	17
11568	SE-5-2B			9	20
11568	SE-5-41			8	6
				9	3
11568	SE-5-42		4730-00-270-6113	8	7
				9	4
11568	SE-5-82A			11	21
11568	SE-5-83B		2990-00-863-0926	11	22
11568	SE-5-85			11	5
11568	SE-5-86B		5340-00-625-6747	11	11
11563	SE-5-87			11	15
11568	SE-5-88			11	17
11568	SE-5-90			11	16
11568	SE-5-91			11	6
11568	SE-5-92A			11	20
11568	SE-5-97			11	10
36232	TV-3013-5-215T-0		6105-01-111-5769	3	1
36232	TV-3013-5-215T-2			3	15
	1				
36232	TV-3013-5-215T-2			3	16
	2				
36232	TV-3013-5-215T-2		3110-01-194-5827	3	24
	5				
36232	TV-3013-5-215T-2			3	14
	6				
36232	TV-3013-5-215T-2			3	13
	8				
36232	TV-3013-5-215T-2			3	26
	9				
36232	TV-3013-5-215T-3			3	20
	0				
36232	TV-3013-5-215T-3		5310-01-194-6322	3	23
	5A				
36232	TV-3013-5-215T-3			3	22
	6				
36232	TV-3013-5-215T-3			3	21
	7				
36232	TV-3013-5-215T-3			3	19
	8				
36232	TV-3013-5-215T-3			3	17
	9				
36232	TV-3013-5-215T-4			3	27
	1				

CROSS-REFERENCE INDEXES

FSCM	PART NUMBER	PART NUMBER INDEX		FIG.	ITEM
			STOCK NUMBER		
36232	TV-3013-5-215T-4 5			3	10
36232	TV-3013-5-215T-4 6			3	7
36232	TV-3013-5-215T-4 7			3	6
36232	TV-3013-5-215T-4 8			3	8
36232	TV-3013-5-215T-4 9			3	5
36232	TV-3013-5-215T-5 0			3	9
11568	UB-375B			9	14
81348	WW-P-471	4730-00-247-9463		9	9
11568	Z-113	4820-00-631-3397		10	16
11568	Z-115	4310-00-631-3396		10	24
11568	Z-124B	4820-01-111-4756		11	4
11568	Z-179C			12	7
11568	Z-189B			12	3
11568	Z-206-200			13	4
11568	Z-30-30			11	
11568	Z-57C			13	6
11568	Z-60A			10	32
11568	Z-752	4310-00-403-0888		12	9
11568	Z-812			10	1
11568	Z-813			10	8
11568	Z-828			9	2
11568	ZNR-20-16	3110-00-100-5304		12	15
11568	ZNR-36-16	3110-01-113-0636		12	19
75336	125B1-4-75PSI	4820-00-421-6984		9	15
19272	13-0867	6110-01-199-8921		5	4
19272	20-6163			1	4
19272	20-6164			1	10
19272	20-6173			1	9
19272	5-03-222-8			13	5
19272	50-6718			13	1
19272	50-6747			4	1
19272	50-6748			6	1
19272	50-6749			1	1
19272	50-6761	4720-O1-208-4328		13	11
79136	5100-98			3	18
14896	61J2-1506			13	12
94222	85-11-340-16	5325-00-281-9126		1	2
94222	85-34-101-20	5310-00-822-8525		1	3
94222	85-47-101-15	5325-00-998-3351		1	5
51917	9013GHG-2B	5933-01-199-8910		7	1

CROSS REFERENCE INDEXES

FIG.	ITEM	FIGURE AND ITEM NUMBER INDEX		PART NUMBER
		STOCK NUMBER	FSCM	
1	1		19272	50-6749
1	2	5325-00-281-9126	94222	85-11-340-16
1	3	5310-00-822-8525	94222	85-34-101-20
1	4		19272	20-6163
1	5	5325-00-998-3351	94222	85-47-101-15
1	6	5310-00-829-9981	96906	MS35649-2312
1	7		96906	MS35338-45
1	8	5306-00-225-9089	96906	MS90726-34
1	9		19272	20-6173
1	10		19272	20-6164
2	1	3030-00-246-0184	96906	MS39256-2B81
3	1	6105-01-111-5769	36232	TV-3013-5-215T-O
3	2	5310-00-056-3395	96906	MS35649-2382
3	3		96906	MS35338-45
3	4		96906	MS90275-60
3	5		36232	TV-3013-5-215T-4 9
3	6		36232	TV-3013-5-215T-4 7
3	7		36232	TV-3013-5-215T-4 6
3	8		36232	TV-3013-5-215T-4 8
3	9		36232	TV-3013-5-215T-5 0
3	10		36232	TV-3013-5-215T-4 5
3	11		11568	M-568
3	12		11568	M-7011D
3	13		36232	TV-3013-5-215T-2 8
3	14		36232	TV-3013-5-215T-2 6
3	15		36232	TV-3013-5-215T-2 1
3	16		36232	TV-3013-5-215T-2 2
3	17		36232	TV-3013-5-215T-3 9
3	18		79136	5100-98
3	19		36232	TV-3013-5-215T-3 8
3	20		36232	TV-3013-5-215T-3 0
3	21		36232	TV-3013-5-215T-3 7
3	22		36232	TV-3013-5-215T-3 6
3	23	5310-01-194-6322	36232	TV-3013-5-215T-3 5A
3	24	3110-01-194-5827	36232	TV-3013-5-215T-2 5

CROSS REFERENCE INDEXES

FIG.	ITEM	FIGURE AND ITEM NUMBER INDEX		PART NUMBER
		STOCK NUMBER	FSCM	
3	25		36232	M-9300-37
3	26		36232	TV-3013-5-215T-2 9
3	27		36232	TV-3013-5-215T-4 1
4	1		19272	50-6747
5	1	5306-00-225-9089	96906	MS90726-34
5	2	5310-00-829-9981	96906	MS35649-2312
5	3		96906	MS35338-45
5	4	6110-01-199-8921	19272	13-0867
6	1		19272	50-6748
7	1	5930-01-199-8910	51917	9013GHG-2B
8	1	4320-01-112-3584	11568	R-30B
8	2		96906	MS51967-15
8	3	5306-01-113-5145	11568	RE-20-105
8	4		11568	NR-36-7B
8	5		11568	RE-20-8
8	6		11568	SE-5-41
8	7	4730-00-270-6113	11568	SE-5-42
8	8		11568	M649
8	9	5310-00-655-9370	96906	MS35340-47
8	10	5305-00-042-9478	96906	MS90725-90
9	1		11568	M-432
9	2		11568	Z-828
9	3		11568	SE-5-41
9	4	4730-00-270-6113	11568	SE-5-42
9	5	4710-01-105-2545	11568	M1480
9	6	4710-01-111-7524	11568	M-1481
9	7		11568	M-1591
9	8	4310-00-477-7986	11568	NR-36-44
9	9	4730-00-247-9463	81348	WW-P-471
9	10		11568	M-1592
9	11	4730-00-142-1593	11568	M-27
9	12		11568	SB-250B
9	13	4730-00-273-8561	96906	MS39169-15
9	14		11568	UB-375B
9	15	4820-00-421-6984	75336	125B1-4-75PSI
9	16	5305-01-088-6838	11568	P-5005
9	17		11568	SE-5-2A
9	18	4730-00-195-5708	11568	RE-10-2E
9	19		11568	NR-2B
9	20		11568	SE-5-2B
9	21	4730-00-195-5708	11568	RE-10-2E
9	22		11568	NR-2B
10	1		11568	Z-812
10	2		11568	P-4544A
10	3		11568	RE-14-71
10	4		11568	RE-14-70
10	5		11568	RE-14-58
10	6		11568	RE-14-72
10	7		11568	P-4134A

CROSS REFERENCE INDEXES

FIG.	ITEM	FIGURE AND ITEM NUMBER INDEX		PART NUMBER
		STOCK NUMBER	FSCM	
10	8		11568	Z-813
10	9		11568	P-4543A
10	10		11568	P-4135A
10	11		11568	RE-10-51A
10	12		11568	RE-10-59A
10	13		11568	RE-10-61
10	14		11568	RE-10-65A
10	15		11568	P-4135A
10	16	4820-00-631-3397	11568	Z-113
10	17		11568	RE-7-81
10	18		11568	P-4137A
10	19		11568	RE-7-56A
10	20		11568	RE-10-62
10	21		11568	RE-7-60
10	22		11568	RE-7-52A
10	23		11568	P-4136A
10	24	4310-00-631-3396	11568	Z-115
10	25		11568	RE-7-81
10	26		11568	P-4137A
10	27		11568	RE-7-53A
10	28		11568	RE-7-60
10	29		11568	RE-10-62
10	30		11568	RE-7-57A
10	31		11568	P-4136A
10	32		11568	Z-60A
10	33		11568	M-1046
10	34		11568	M-97A
10	35		11568	M-98A
10	36		11568	M461
10	37		91906	MS51953-63B
11			11568	Z-30-30
11	1	5305-00-709-8523	96906	MS90727-87
11	2		11568	NR-14-6B
11	3		11568	NR-29-A
11	4	4820-01-111-4756	11568	Z-124B
11	5		11568	SE-5-85
11	6		11568	SE-5-91
11	7		00041	AK6
11	8	4820-00-625-6749	11568	SE-30-101
11	9		11568	H-122
11	10		11568	SE-5-97
11	11	5340-00-625-6747	11568	SE-5-86B
11	12		11568	SE-14-84
11	13		11568	SE-30-100
11	14		11568	SE-30-89
11	15		11568	SE-5-87
11	16		11568	SE-5-90
11	17		11568	SE-5-88
11	18		96906	MS96727-87
11	19		96906	MS35338-47
11	20		11568	SE-5-92A

CROSS REFERENCE INDEXES

FIG.	ITEM	FIGURE AND ITEM NUMBER INDEX		PART NUMBER
		STOCK NUMBER	FSCM	
11	21		11568	SE-5-82A
11	22	2990-00-863-0926	11568	SE-5-83B
11	23	5305-00-071-1788	96906	MS90728-87
11	24		11568	NR-36-104
11	25		11568	NR-36-113
11	26		11568	SE-30-30
11	27		11568	SE-30-30A
11	28		11568	SE-30-30B
11	29		11568	SE-30-30C
11	30		11568	RE-7-14
11	31		11568	M-459
11	32		11568	M-484
11	33		11568	M-1898
12	1		11568	R-10-102
12	2		11568	R-10-21
12	3		11568	Z-189B
12	4	4310-01-111-5785	11568	R-10-4
12	5		11568	R-10-102
12	6		11568	R-10-21
12	7		11568	Z-179C
12	8	4310-00-208-7126	11568	R-15-4
12	9	4310-00-403-0888	11568	Z-752
12	10		11568	M-1583
12	11		11568	M-1584
12	12		11568	R-10-37
12	13		11568	R-10-24
12	14	4310-00-477-8001	11568	R-30-5
12	15	3110-00-100-5304	11568	ZNR-20-16
12	16		11568	OS-N36A
12	17		11568	NR-20-16
12	18		11568	NR-20-16A
12	19	3110-01-113-0636	11568	ZNR-36-16
12	20		11568	NR-36-16
12	21		11568	NR-36-16A
13	1		19272	50-6718
13	2		11568	P-1400D
13	3	6685-01-111-0147	11568	M-519G
13	4		11568	Z-206-200
13	5		19272	5-03-222-8
13	6		11568	Z-57C
13	7	4710-01-111-7932	11568	HR-10-8
13	8		11568	M-521
13	9	4720-01-112-3683	11568	M-434H
13	10	4820-00-209-1775	11568	M-524
13	11	4720-01-208-4328	19272	50-6761
13	12		14896	61J2-1506

By Order of the Secretary of the Army:

CARL E. VUONO
General, United States Army
Chief of Staff


Official:

WILLIAM J. MEEHAN, II
Brigadier General, United States Army
The Adjutant General

DISTRIBUTION:

To be distributed in accordance with DA Form 12-25A, Unit and Direct Support and General Support Maintenance requirements for Compressor Unit, Reciprocating, Electric, 25 CFM, 175 PSI (50-6717).

RECOMMENDED CHANGES TO EQUIPMENT TECHNICAL PUBLICATIONS

 <p style="font-size: small; margin: 0;"><i>THEN...JOT DOWN THE DOPE ABOUT IT ON THIS FORM. CAREFULLY TEAR IT OUT, FOLD IT AND DROP IT IN THE MAIL.</i></p>		SOMETHING WRONG WITH PUBLICATION	
		FROM: (PRINT YOUR UNIT'S COMPLETE ADDRESS)	
DATE SENT			
PUBLICATION NUMBER		PUBLICATION DATE	PUBLICATION TITLE
BE EXACT PIN-POINT WHERE IT IS			
PAGE NO.	PARA-GRAPH	FIGURE NO.	TABLE NO.
<p style="font-weight: bold; margin: 0;">IN THIS SPACE, TELL WHAT IS WRONG AND WHAT SHOULD BE DONE ABOUT IT.</p>			
PRINTED NAME, GRADE OR TITLE AND TELEPHONE NUMBER			SIGN HERE

TEAR ALONG PERFORATED LINE

DA FORM 1 JUL 79 **2028-2**

PREVIOUS EDITIONS ARE OBSOLETE.

P.S.--IF YOUR OUTFIT WANTS TO KNOW ABOUT YOUR RECOMMENDATION MAKE A CARBON COPY OF THIS AND GIVE IT TO YOUR HEADQUARTERS.

The Metric System and Equivalents

Linear Measure

1 centimeter = 10 millimeters = .39 inch
 1 decimeter = 10 centimeters = 3.94 inches
 1 meter = 10 decimeters = 39.37 inches
 1 dekameter = 10 meters = 32.8 feet
 1 hectometer = 10 dekameters = 328.08 feet
 1 kilometer = 10 hectometers = 3,280.8 feet

Weights

1 centigram = 10 milligrams = .15 grain
 1 decigram = 10 centigrams = 1.54 grains
 1 gram = 10 decigrams = .035 ounce
 1 dekagram = 10 grams = .35 ounce
 1 hectogram = 10 dekagrams = 3.52 ounces
 1 kilogram = 10 hectograms = 2.2 pounds
 1 quintal = 100 kilograms = 220.46 pounds
 1 metric ton = 10 quintals = 1.1 short tons

Liquid Measure

1 centiliter = 10 milliliters = .34 fl. ounce
 1 deciliter = 10 centiliters = 3.38 fl. ounces
 1 liter = 10 deciliters = 33.81 fl. ounces
 1 dekaliter = 10 liters = 2.64 gallons
 1 hectoliter = 10 dekaliters = 26.42 gallons
 1 kiloliter = 10 hectoliters = 264.18 gallons

Square Measure

1 sq. centimeter = 100 sq. millimeters = .155 sq. inch
 1 sq. decimeter = 100 sq. centimeters = 15.5 sq. inches
 1 sq. meter (centare) = 100 sq. decimeters = 10.76 sq. feet
 1 sq. dekameter (are) = 100 sq. meters = 1,076.4 sq. feet
 1 sq. hectometer (hectare) = 100 sq. dekameters = 2.47 acres
 1 sq. kilometer = 100 sq. hectometers = .386 sq. mile

Cubic Measure

1 cu. centimeter = 1000 cu. millimeters = .06 cu. inch
 1 cu. decimeter = 1000 cu. centimeters = 61.02 cu. inches
 1 cu. meter = 1000 cu. decimeters = 35.31 cu. feet

Approximate Conversion Factors

To change	To	Multiply by	To change	To	Multiply by
inches	centimeters	2.540	ounce-inches	newton-meters	.007062
feet	meters	.305	centimeters	inches	.394
yards	meters	.914	meters	feet	3.280
miles	kilometers	1.609	meters	yards	1.094
square inches	square centimeters	6.451	kilometers	miles	.621
square feet	square meters	.093	square centimeters	square inches	.155
square yards	square meters	.836	square meters	square feet	10.764
square miles	square kilometers	2.590	square meters	square yards	1.196
acres	square hectometers	.405	square kilometers	square miles	.386
cubic feet	cubic meters	.028	square hectometers	acres	2.471
cubic yards	cubic meters	.765	cubic meters	cubic feet	35.315
fluid ounces	milliliters	29.573	cubic meters	cubic yards	1.308
pints	liters	.473	milliliters	fluid ounces	.034
quarts	liters	.946	liters	pints	2.113
gallons	liters	3.785	liters	quarts	1.057
ounces	grams	28.349	liters	gallons	.264
pounds	kilograms	.454	grams	ounces	.035
short tons	metric tons	.907	kilograms	pounds	2.205
pound-feet	newton-meters	1.356	metric tons	short tons	1.102
pound-inches	newton-meters	.11296			

Temperature (Exact)

°F	Fahrenheit temperature	5/9 (after subtracting 32)	Celsius temperature	°C
----	------------------------	----------------------------	---------------------	----

TM 5-4310-371-24P

PIN: 049783